

Aluminium tape ATSS

Adhesive tape aluminium, acrylic adhesive, used for installation of mineral wool insulation.

Technical specifications

Width x length [mm x m]	Temperature [°C]	Box [pcs.]
50 x 45	-35/120	24
75 x 45	-35/120	16
100 x 45	-35/120	12

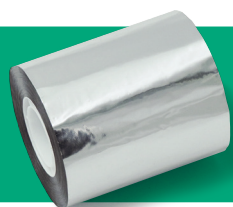


White textile tape TTB

Textile adhesive tape, reinforced with fabric mesh, white colour, rubber adhesive, waterproof, high initial bonding strength, for insulation of copper pipe connections in insulation, among others.

Technical specifications

Width x length [mm x m]	Temperature [°C]	Box [pcs.]
48 x 50	-10/75	24



Metallized tape ATPP

Polypropylene adhesive tape, metallized aluminium layer, acrylic adhesive, for insulation of ventilation duct connections, among others.

Dane techniczne

Width x length [mm x m]	Temperature [°C]	Box [pcs.]
50 x 50	-10/70	96
75 x 50	-10/70	64

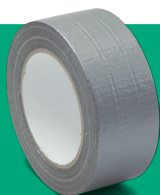


Black textile tape TTC

Textile adhesive tape "TTC", reinforced with fabric mesh, black colour. Rubber adhesive. Waterproof. High initial bonding force. Used, among others, for insulation of copper pipe connections in insulation. Resistant to temperatures from 0°C to +60°C.

Technical specifications

Width x length [mm x m]	Temperature [°C]	Box [pcs.]
50 x 45	-10/75	24



Grey textile tape TTS

Textile adhesive tape "Duct Tape", reinforced with fabric mesh, grey colour, rubber adhesive, waterproof, high strength of initial bonding, for insulation of ventilation connections, among others.

Technical specifications

Width x length [mm x m]	Temperature [°C]	Box [pcs.]
48 x 50	-10/75	24



Mounting tape PVC PVCT

Mounting self-adhesive tape PVC, flexible, grey colour, rubber adhesive, resistant to temperature +80°C, for insulation of ventilation connections, among others.

Technical specifications

Width x length [mm x m]	Temperature [°C]	Box [pcs.]
50 x 33	0/80	45