

Duct fans ICM EC



High efficiency motor



IP 44 protection class



Easy installation



Controller 0-10 V

Design

Duct fan, diagonal. Its unique design and the use of the most modern electronically commutated (EC motor) allows it to achieve high operating parameters with relatively low noise and very low energy consumption. The fan cover is made of polypropylene, while the rotor is made of ABS plastic. Special connectors make it easy to install, remove and maintain the appliance. The device can be installed both horizontally and vertically.

Usage

The ICM-EC fan is designed to transport clean air. It is ideal for the installation of air-supply and exhaust in residential buildings, public utility buildings, offices, shops. The device can also be used for the installation of fume hoods from kitchen hoods that require the use of grease filters.

Electric motor

High efficiency electronically commutated direct current motor (EC).

Power supply 230V ~1, 50Hz. The engines are designed for smooth full range speed regulation while maintaining high efficiency. The speed control is realized by means of a controller using an analogue signal 0-10V. Protection class IP44.

Operating temperature

The fan is designed to transmit air with a temperature not exceeding 60°C.



Dynamically balanced diagonal rotor



Sealed connection box located on the cover



Special profiled guides located behind the rotor ensure higher efficiency



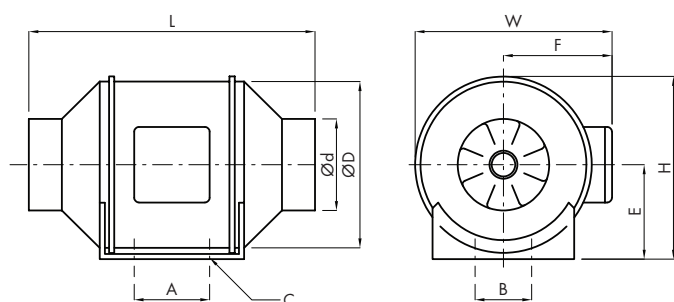
Stable mounting base for the fan

Technical specifications

Model	Air flow [m³/h]	Impeller speed [rpm]	Power [W]	Current [A]	Voltage [V]	Frequency [Hz]	Sound pressure level [dB(A)]	Weight [kg]	Controller HMTF	Controller RS-EC
ICM-EC-100/366M	366	3800	70	0,47	230	50	35	1,8	Yes	Yes
ICM-EC-125/561M	561	3800	70	0,47	230	50	35	2	Yes	Yes
ICM-EC-150-160/647M	647	3000	70	0,47	230	50	43	2,7	Yes	Yes
ICM-EC-200/1250M	1250	3000	180	1,05	230	50	50	4,9	Yes	Yes
ICM-EC-250/1652M	1652	3000	255	1,5	230	50	65	7,9	Yes	Yes
ICM-EC-315/2206M	2206	2350	250	1,4	230	50	68	11,3	Yes	Yes

Sound pressure level measured at 3m.

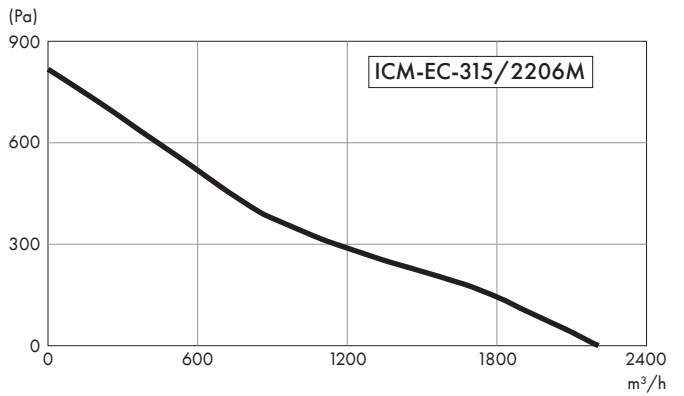
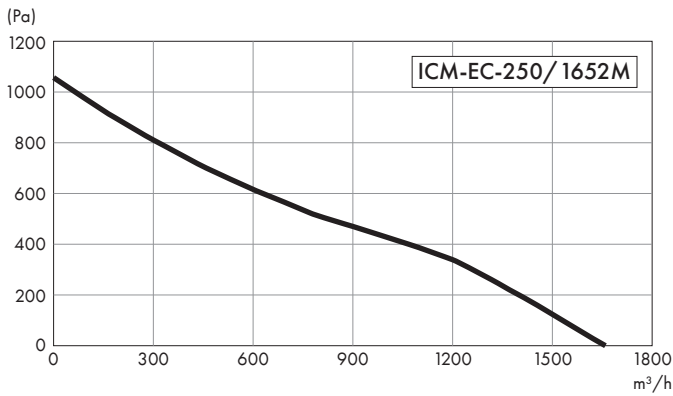
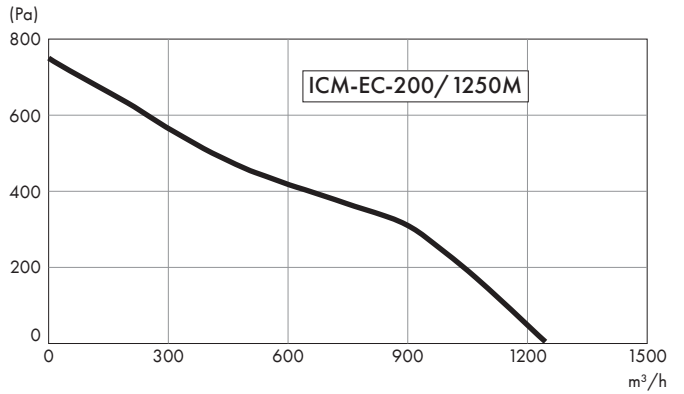
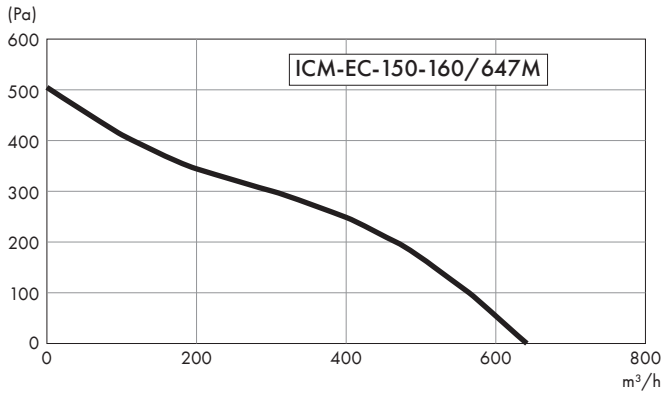
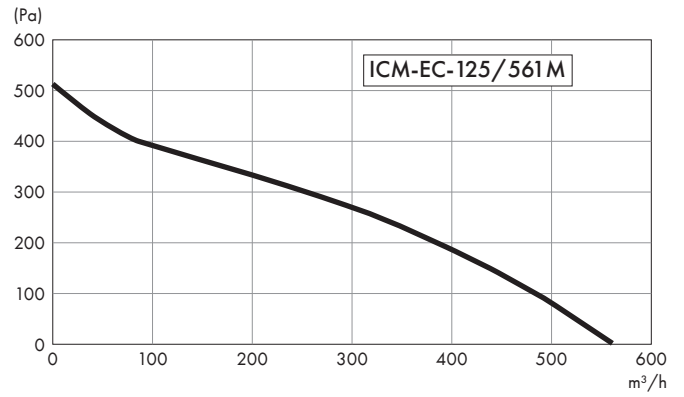
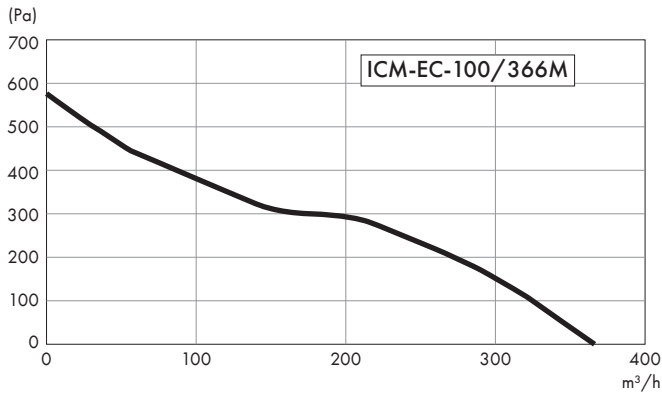
Technical drawing



Dimensions [mm]

Model	A	B	ØC	Ød	E	F	ØD	L	W	H
ICM-EC-100/366M	80	60	4 - 4,5	97	99	116	163	302	204	195
ICM-EC-125/561M	80	60	4 - 4,5	123	99	116	163	257	204	195
ICM-EC-150-160/647M	80	60	4 - 5,0	147	109	127	187	313	227	208
ICM-EC-200/1250M	100	94	4 - 5,5	197	125	137	205	302	249	237
ICM-EC-250/1652M	150	150	4 - 8*11	247	150	174	261	383	310	286
ICM-EC-315/2206M	181	178	4 - 8*11	312	187	216	325	446	386	357

Characteristics



Accessories



HMTP
Potentiometer for EC motors
page 175



FKOV
Filter G3 for round ducts
page 83



AKUFLEX
Flexible acoustic silencer
page 71



RSKV
Backdraft damper
page 41



RS-EC
Speed controller for EC motors
page 175



WSH
Service switch
page 177



PCC
Fastening clamp
page 81



PSH
Pressure switch
page 173